

## Mission Statement

The Mission of the Public School Retirement System of the City of St. Louis is to enhance the well-being and financial security of its members, retirees and beneficiaries through benefit programs and services which are soundly financed and prudently administered in an effective and efficient manner.



## In This Issue

In Memoriam	1
New Retirees	2
Member Education Sessions	2
Retirement Application Deadline	3
Contacts	3
Staff News	3
Fourth Quarter Investment Brief	4
Reminders	4



## Welcome Spring

Despite the forecast, live like it's spring.

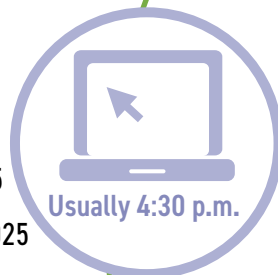
Lilly Pulitzer

## In Memoriam

This section lists recently deceased retirees and can be found in the Retiree Version of the Newsletter, which is posted on the PSRSSTL website.

## Regular Board Meeting 2025 Schedule

- April 21, 2025
- June 16, 2025
- August 11, 2025
- October 20, 2025
- December 15, 2025



Meetings are currently open to the public via LiveStream on YouTube. The link is available on the website, [www.psrstl.org](http://www.psrstl.org).

## Board of Trustees

- Dr. Candice Carter-Oliver
- Christina C. Bennett
- Louis C. Cross III (Chairman)
- Emily Hubbard
- Kimberly Johnson
- Shanise Johnson
- Yvette A. Levy
- Martel Mann
- Bobbie Richardson (Vice-Chairperson)
- Albert J. Sanders, Jr.
- Dorris Walker (Treasurer)

Editors:  
Susan Kane, Executive Director & PSRSSTL staff

## New Retirees

Congratulations to the most recent PSRSSTL retirees from November 2024 - March 2025.

Toyin Akinola

Angela Banks

Shantrell Berry-Newman

Marcia Beyer

Osborne Black

Calra Brown-Riley

Barbara Buckner

Leroy Burks

Ruth Carnoske

Dominic Churchill

Quency Cooper

Donna Cunningham

Janice Denigan

Karen Hamilton

Faye Hamilton

Valerie Harriel

John Harris

Carlet Harvey

Shanta Hayes

Bobby Jones

Anthony Mcgrew

Michael Meehan III

Denise Ross

Geneva Saunders

Michelle Sims-Bush

Tracy Stumpf

Todd Vierling

Mary Winter

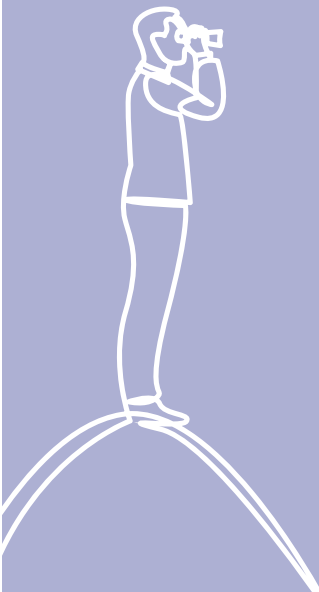
Marjorie Woods



### Member Education Sessions

The 2025 Retirement Seminar schedule is now available. The virtual program is designed especially for those members nearing retirement and will be held on May 7, June 25 and October 15, 2025. This program offers information on the retirement benefit and insurance coverages offered by PSRSSTL to retired members.

The System also offers a New Member Orientation Program, which will be held virtually on April 30 and September 24. This session provides information of interest to newer members, such as how the plan works and understanding member contributions. Please visit the website, [www.psrstl.org](http://www.psrstl.org), to register for one of these programs, or to view one of the previously recorded sessions.



## Retirement Application Deadline

Applications must be filed at least 15 days prior to retirement. The upcoming deadlines are:

RETIREMENT	DEADLINE
May 1, 2025	April 16, 2025
June 1, 2025	May 16, 2025
July 1, 2025	June 16, 2025
August 1, 2025	July 17, 2025
September 1, 2025	August 18, 2025
October 1, 2025	September 16, 2025
November 1, 2025	October 17, 2025



### Website Update

One of the important ways that PSRSSTL communicates to its members is through the System's website. Members have requested the ability to access their personal retirement information on the website. Unfortunately, that option is not available now. PSRSSTL staff are working with an outside vendor on a new system that will provide more self-service opportunities for members in the future. It will take several years to accomplish but we are excited to begin working on this important project. The website does contain a variety of information including Board Meeting Notices, Recordings, and materials, Member Handbook, Webinar Recordings, and Retirement Forms. The site has just recently undergone a transformation so if you haven't checked it out lately, now is the perfect time. Click on [www.psrstl.org](http://www.psrstl.org) and start exploring.

### PSRSSTL Staff Contacts

 **ph: 314-534-7444**    
  **fax: 314-533-0531**

 **address: 3641 Olive Street, Suite 300**  
**St. Louis, MO 63108**

- |                                 |   |
|---------------------------------|---|
| Angela Johnson, ext. 3014       | Member Services Manager                                       |
| Ann Connor, ext. 3013           | Receptionist/Clerical Assistant                               |
| Monica Brewer, ext. 3011        | Insurance Benefits Specialist                                 |
| Robin Willis, ext. 3010         | Customer Service/Beneficiary<br>Family Contact Representative |
| Randy Elam, ext. 3017           | Technology Manager  |
| Miata Reeves-Borne<br>ext. 3012 | Accounting Specialist   |
| Susan Kane, ext. 3015           | Executive Director  |

**WE'RE NOW ON  
LINKEDIN!**



Connect with us on LinkedIn and stay updated with the latest information to help you live your best retirement. We'll share various content related to retirement benefits, pension fund information, office resources, and more to keep you informed. Connect with us today at <https://www.linkedin.com/company/public-school-retirement-system-of-the-city-of-st-louis>.

# 2024 Fourth Quarter Investment Brief

“Investing Your Money For Lifetime Security”



The Retirement System’s investment portfolio decreased by -1.35% in the Fourth Quarter, ranking in the 60th percentile of similar public funds. Returns were slightly negative for the quarter as the investment markets considered change in economic policy with the new Administration. During the one year period ending December 31, 2024, the Retirement System recorded a return on investments of 8.82%, ranking in the 79th percentile. The summaries of the PSRSSTL market value, rankings, investment returns, and asset allocation of funds held in trust on behalf of the membership for the reporting period are listed in the tables below.

Market Value		
Period ending 12/31/24	One Quarter	One Year
Beginning Market Value	\$869,374,713	\$842,957,778
Net Additions/Deductions <sup>1</sup>	\$ 9,053,825	-\$47,756,545
Return on Investment	-\$12,252,710	\$70,974,595
Ending Market Value	\$866,175,828	\$866,175,828

<sup>1</sup>Deductions fund pension payments

Period Ending 12/31/24	Percentile Ranking (Public Funds Universe)	Investment Return
One Quarter	61st	-1.35%
One Year	79th	8.82%
Three Years	56th	2.66%
Five Years	70th	6.32%
Ten Years	78th	6.42%
Since 1997	51st	6.83%

Asset Allocation Summary Period Ending 12/31/24		
Asset Class	Market Value	% of Portfolio
Domestic Stocks	\$244,019,735	28.2%
Domestic Fixed Income (Bonds)	\$94,494,930	10.9%
International Equity	\$127,168,416	14.7%
Global Equity	\$45,749,041	5.3%
Global Fixed Income (Bonds)	\$64,476,608	7.5%
Emerging Markets Debt	\$23,452,017	2.7%
Tactical Asset Allocation (GTAA)	\$24,070,780	2.8%
Hedge Funds	\$53,439,298	6.2%
Real Estate	\$66,194,651	7.6%
Alternatives	\$100,582,407	11.6%
Cash	\$22,527,945	2.5%
Total	\$866,175,828	100%

## Reminders



PSRSSTL Office will be closed the afternoon of Friday, April 18. PSRSSTL Office will also be closed on Monday, May 26 for Memorial Day, Thursday, June 19 for Juneteenth and Friday, July 4 for Independence Day Holiday.

Staff is available Monday – Friday from 8:00 a.m.- 4:30 p.m. via email and telephone or in person by appointment. A secure drop box is located outside the PSRSSTL office.