

# PSRSSTL

Public School Retirement System of the City of St. Louis

Volume XXIV | Issue IIB | Summer 2025

## Mission Statement

The Mission of the Public School Retirement System of the City of St. Louis is to enhance the well-being and financial security of its members, retirees and beneficiaries through benefit programs and services which are soundly financed and prudently administered in an effective and efficient manner.



## In This Issue

In Memoriam	1
New Retirees	2
Member	
Education Sessions	2
Retirement Application	
Deadline	3
Contacts	3
New Legislation	3
First Quarter	
Investment	4
Reminders	4



## Hello Summer

**Live in the sunshine. Swim in the sea.  
Drink in the wild air.**

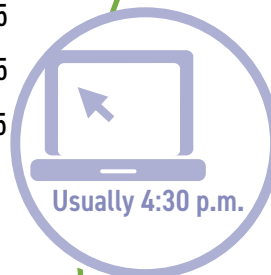
**Ralph Waldo Emerson**

## In Memoriam

This section lists recently deceased retirees and can be found in the Retiree Version of the Newsletter, which is posted on the PSRSSTL website.

## Regular Board Meeting 2025 Schedule

- August 11, 2025
- October 20, 2025
- December 15, 2025



Usually 4:30 p.m.

Meetings are currently open to the public via LiveStream on YouTube. The link is available on the website, [www.psrstl.org](http://www.psrstl.org).

## Board of Trustees

- Dr. Candice Carter-Oliver
- Christina C. Bennett
- Louis C. Cross III (Chairman)
- Emily Hubbard
- Kimberly Johnson
- Shanise Johnson
- Dr. Yvette A. Levy
- Jennifer Orr
- Bobbie Richardson (Vice-Chairperson)
- Dr. Albert J. Sanders, Jr.
- Dorris Walker (Treasurer)

### Editors:

Susan Kane, Executive Director & PSRSSTL staff

## New Retirees

Congratulations to the most recent PSRSSTL retirees from April 2025 - July 2025.

Latrisa Avery  
Jeannette Banks  
Denise Battle  
Donna Black  
Sharhonda Blount  
Sandra Book  
Jeanne Bryant  
Relaina Burns  
Rhonda Cannon  
Vickie Chapman  
Wilton Cheatham  
Veronica Cruz  
Steven Curran  
Karen Dennis  
Robert Dorries

Judith Felts  
Esther Gehrett  
Margaret Glaspy  
Abrahazion Habtu  
Ann Hamilton  
Sharon Harkness  
Doris Hawkins  
Belinda Hilliard  
Shane Hopper  
Donna Horton  
Karen Howze-Wince  
James Johnson  
Yolanda Johnson  
Suzanne Kaelble  
Kevin Kelly

Jill Kelsey  
Helen Lane  
Timothy Laster  
Judith Lee  
Yvette Lewis  
Ruthanne Long  
Gary Mason  
Jacquelyn McCain  
Linda Nash  
Tom Pardee  
Tina Parker  
Rebecca Price-Jones  
Mark Schister  
Barbara Sharp  
Phyllis Shelby

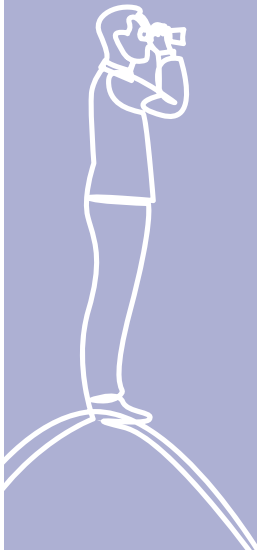
Marilyn Simmons  
Sheryl Simmons  
Stephany Smith  
Chevelle Stewart  
Glenda Turner  
Jeremy Vanpelt  
Anthony Viridure  
Patricia Wade  
Shirley Walters  
Mara Wansong  
Laurie Ann Warren  
Michelle Washington  
Carla Wilder  
Darlene Williams  
Evelyn Wittenauer  
Monica Wright



### Member Education Sessions

There is still time to attend a PSRSSTL Retirement Seminar in 2025. The virtual program is designed especially for those members nearing retirement. The last session of 2025 will be held on October 15, 2025. This program offers information on the retirement benefit and insurance coverages offered by PSRSSTL to retired members.

The System also offers a New Member Orientation Program, which will be held virtually on September 24. This session provides information of interest to newer members, such as how the plan works and understanding member contributions. Please visit the website, [www.psrstl.org](http://www.psrstl.org), to register for one of these programs, or to view one of the previously recorded sessions.



# Retirement Application Deadline

Applications must be filed at least 15 days prior to retirement. The upcoming deadlines are:

RETIREMENT	DEADLINE
September 1, 2025	August 18, 2025
October 1, 2025	September 16, 2025
November 1, 2025	October 17, 2025
December 1, 2025	November 17, 2025
January 1, 2026	December 17, 2025



## GOVERNOR SIGNS NEW PENSION LEGISLATION

Governor Mike Kehoe signed into law House Bill NO. 147 (HB 147), which takes effect on August 28, 2025. The portions of the bill that impact PSRSSTL are related to the employer contribution rate and the composition of the PSRSSTL Board of Trustees.

Employer contribution rates will change to 14% effective January 1, 2026, an increase from the current 12.5%. Member contribution rates will remain at 9%. No changes were made to benefit formulas or eligibility. The PSRSSTL Board of Trustees will increase to 13 members, with 2 Trustees appointed by the Missouri Public Charter School Association. One of these members must be a teacher.

### PSRSSTL Staff Contacts

ph: 314-534-7444 fax: 314-533-0531

address: 3641 Olive Street, Suite 300  
St. Louis, MO 63108

- Angela Johnson, ext. 3014 Member Services Manager
- Ann Connor, ext. 3013 Receptionist/Clerical Assistant
- Monica Brewer, ext. 3011 Insurance Benefits Specialist
- Robin Willis, ext. 3010 Customer Service/Beneficiary Family Contact Representative
- Randy Elam, ext. 3017 Technology Manager
- Miata Reeves-Borne ext. 3012 Accounting Specialist
- Susan Kane, ext. 3015 Executive Director

### WE'RE NOW ON LINKEDIN!



Connect with us on LinkedIn and stay updated with the latest information to help you live your best retirement. We'll share various content related to retirement benefits, pension fund information, office resources, and more to keep you informed. Connect with us today at <https://www.linkedin.com/company/public-school-retirement-system-of-the-city-of-st-louis>.

## 2025 First Quarter Investment Brief

“Investing Your Money For Lifetime Security”



The Retirement System’s investment portfolio increased by .28% in the First Quarter, ranking in the 39th percentile of similar public funds. Returns were slightly positive for the quarter as the investment markets considered possible tariffs and the impact on the economy. During the one year period ending March 31, 2025, the Retirement System recorded a return on investments of 4.98%, ranking in the 69th percentile. The summaries of the PSRSSTL market value, rankings, investment returns, and asset allocation of funds held in trust on behalf of the membership for the reporting period are listed in the tables below.

Market Value		
Period ending 3/31/25	One Quarter	One Year
Beginning Market Value	\$867,362,127	\$859,568,872
Net Additions/Deductions <sup>1</sup>	\$ -16,891,190	-\$47,454,632
Return on Investment	\$ 2,460,796	\$40,817,494
Ending Market Value	\$852,931,733	\$852,931,733

<sup>1</sup>Deductions fund pension payments

Period Ending 3/31/25	Percentile Ranking (Public Funds Universe)	Investment Return
One Quarter	39th	.28%
One Year	69th	4.98%
Three Years	55th	4.30%
Five Years	61st	10.02%
Ten Years	80th	6.19%
Since 1997	41st	6.78%

Asset Allocation Summary Period Ending 3/31/25		
Asset Class	Market Value	% of Portfolio
Domestic Stocks	\$232,482,870	27.3%
Domestic Fixed Income (Bonds)	\$97,428,631	11.5%
International Equity	\$135,304,224	15.9%
Global Equity	\$45,517,217	5.3%
Global Fixed Income (Bonds)	\$65,506,549	7.7%
Emerging Markets Debt	\$23,875,686	2.8%
Tactical Asset Allocation (GTAA)	\$24,882,720	2.9%
Hedge Funds	\$53,591,628	6.3%
Real Estate	\$66,937,500	7.8%
Alternatives	\$100,213,289	11.7%
Cash	\$ 7,191,419	.8%
<b>Total</b>	<b>\$852,931,733</b>	<b>100%</b>

### Reminders



PSRSSTL Office will be closed on Monday, September 1 for Labor Day and Tuesday, November 11 for Veterans Day Holiday.

Staff is available Monday – Friday from 8:00 a.m.- 4:30 p.m. via email and telephone or in person by appointment. A secure drop box is located outside the PSRSSTL office.